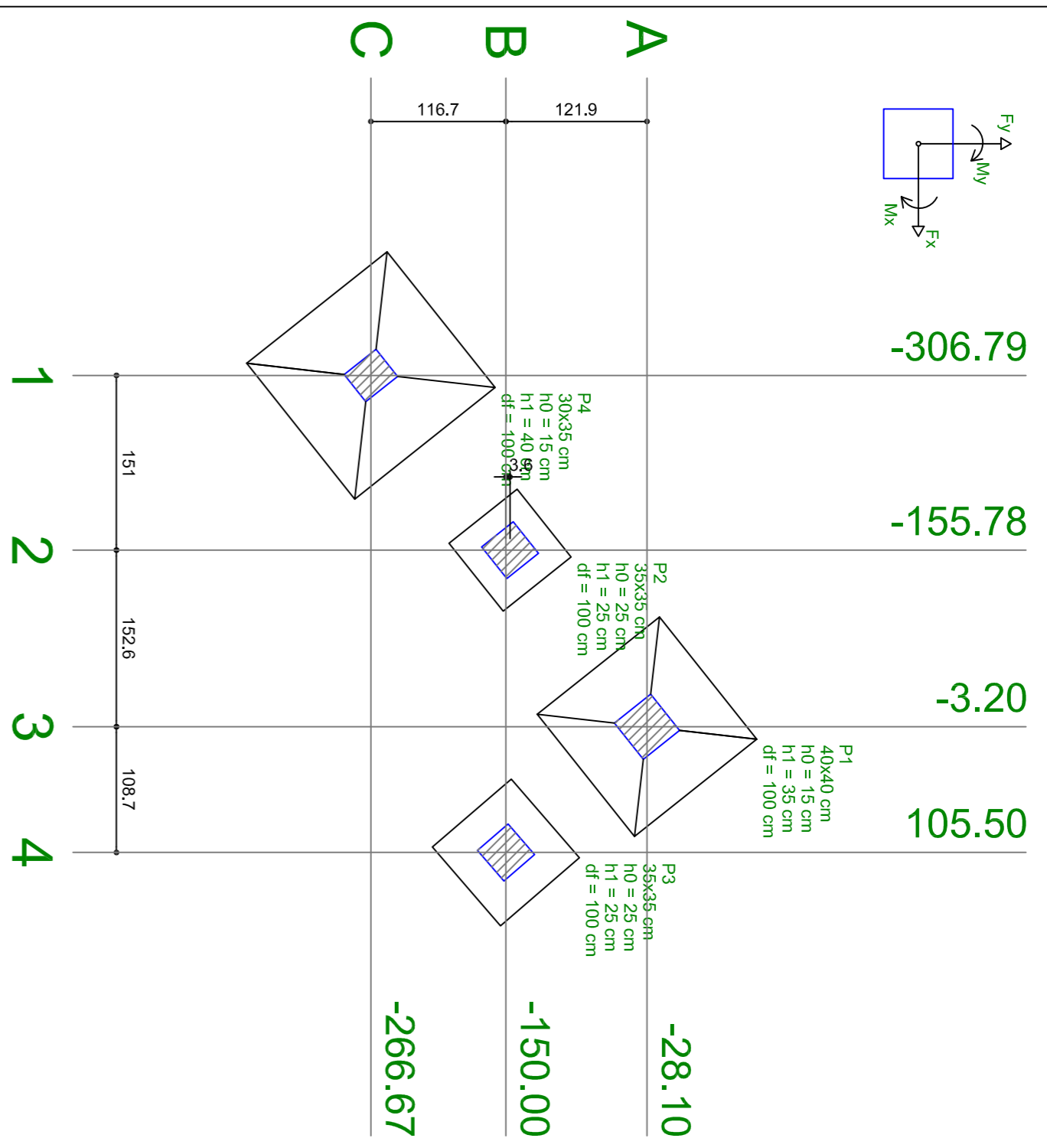
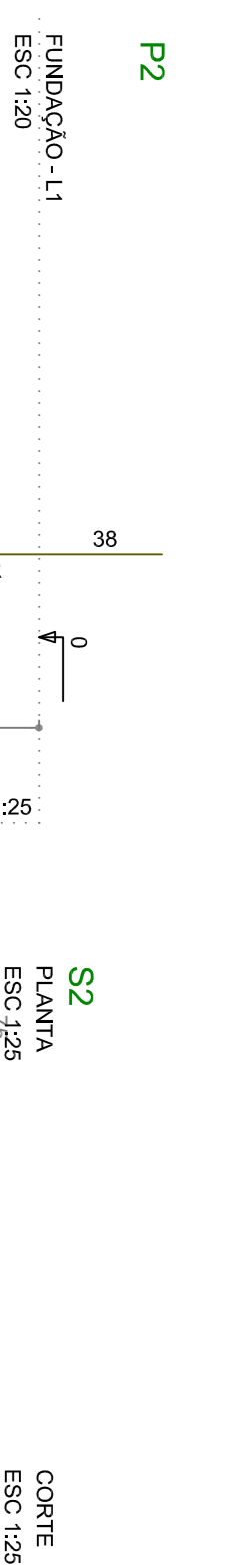
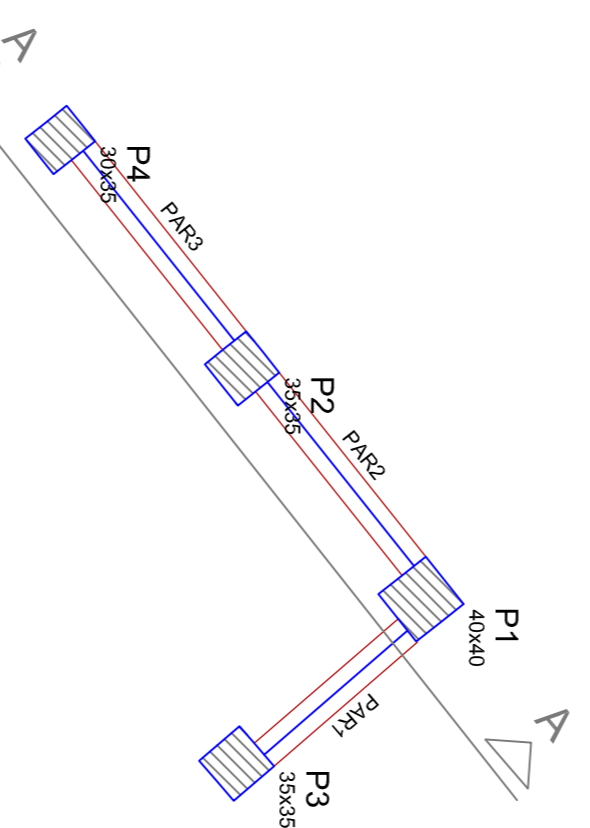


Nome	Seção	X (cm)	Y (cm)	Carga Max. (t)	Carga Min. (t)	Lado B (cm)	Lado H (cm)	H0/Ha (cm)	H1/Hb (cm)	df (cm)
P1	40x40	-3,20	-24,10	5,2	4,6	135	135	15	35	100
P2	35x35	-155,78	-146,42	5,5	5,2	75	75	25	25	100
P3	35x35	105,50	-150,00	8,9	8,5	90	90	25	25	100
P4	35x35	-266,67	-266,67	3,0	3,0	150	150	15	40	100

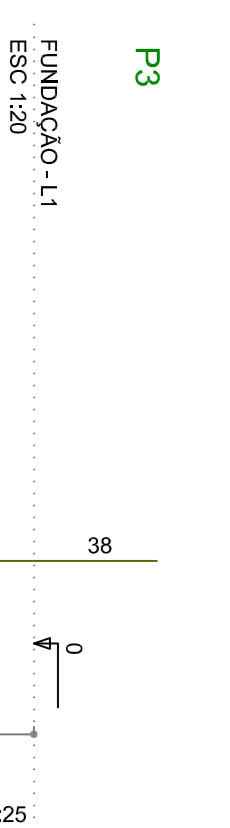


Planta de localização  
escala 1:50

Forma do pavimento fundação  
escala 1:50



Solo com capacidade de suporte > 1.50 kgf/cm²  
Solo compactado sobre a sapata  
peso específico > 1800,00 kg/m³



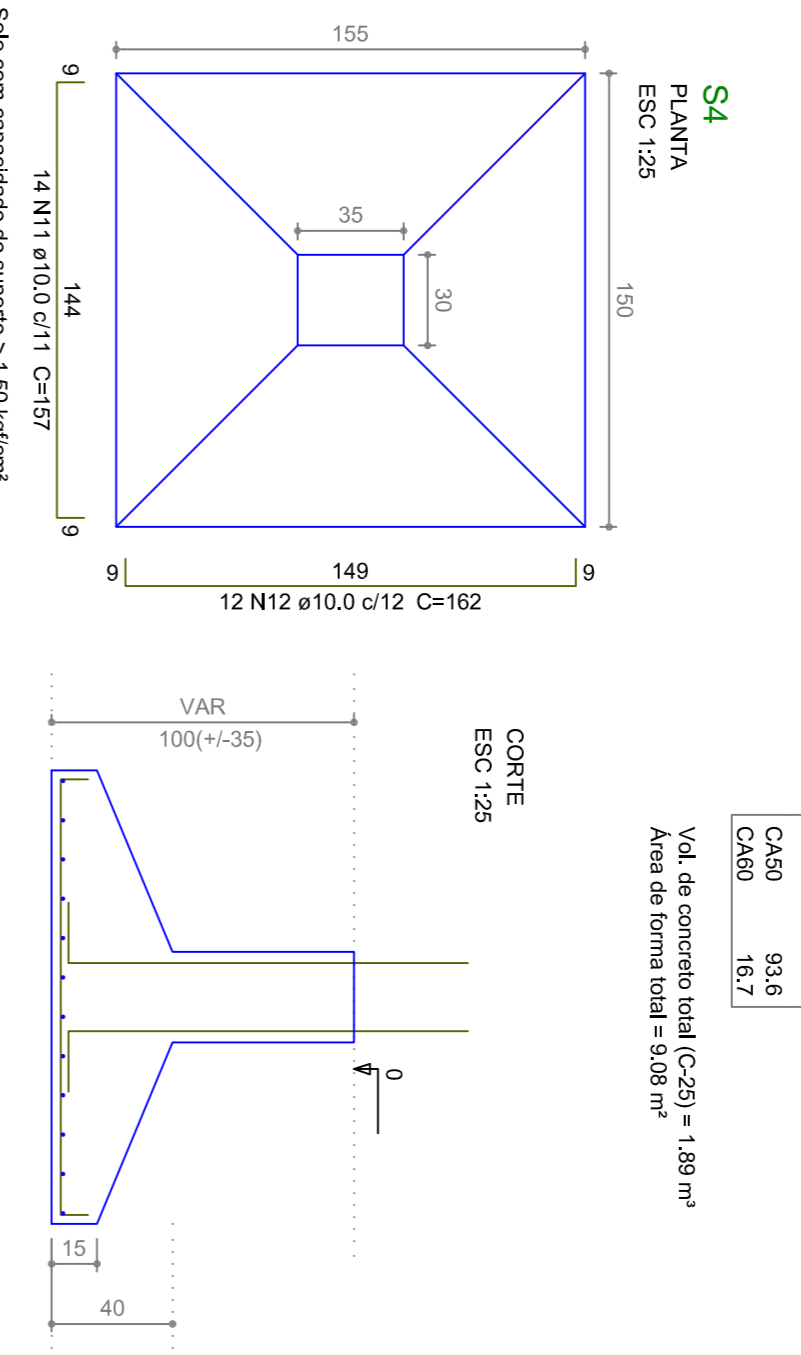
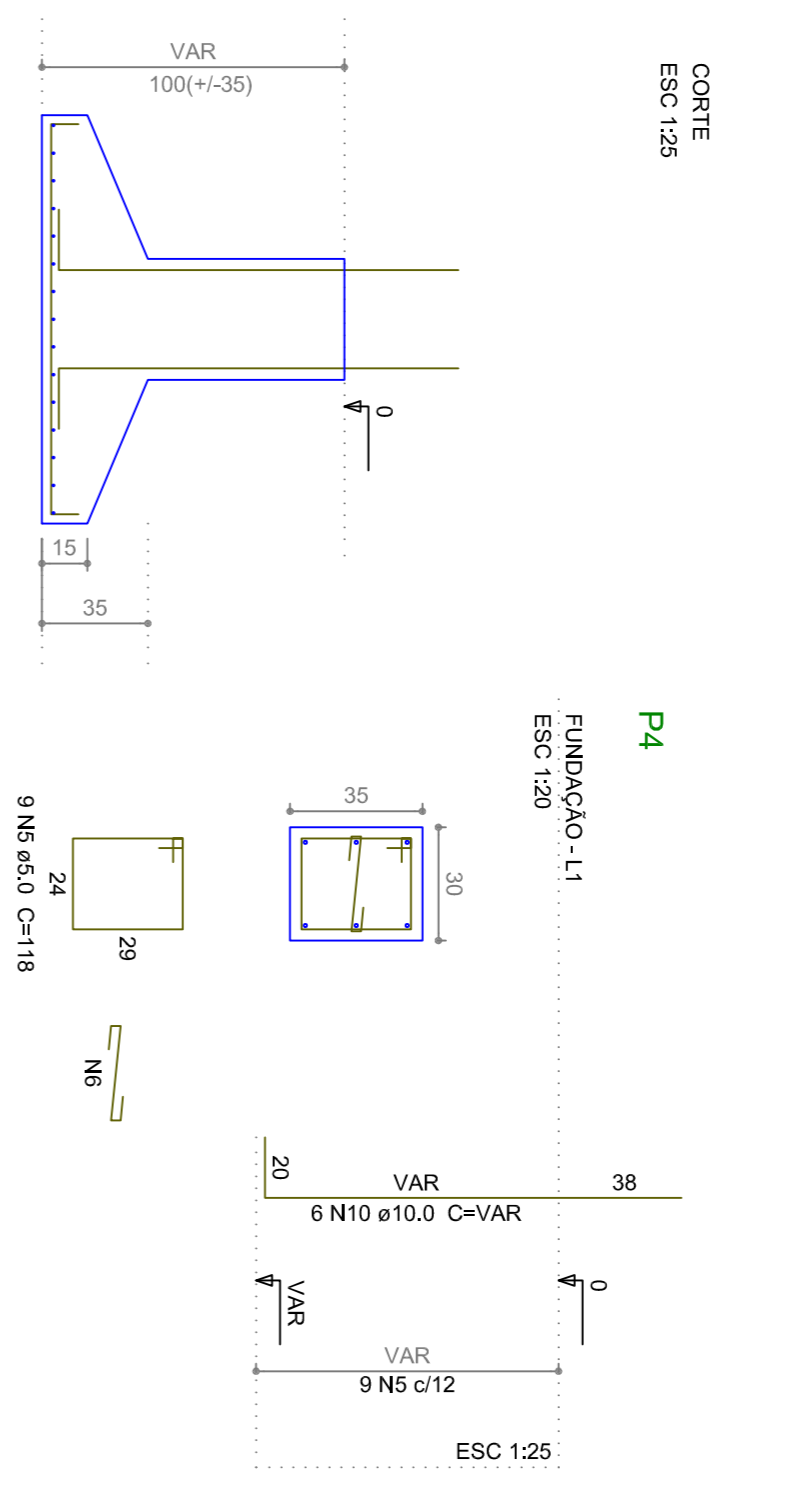
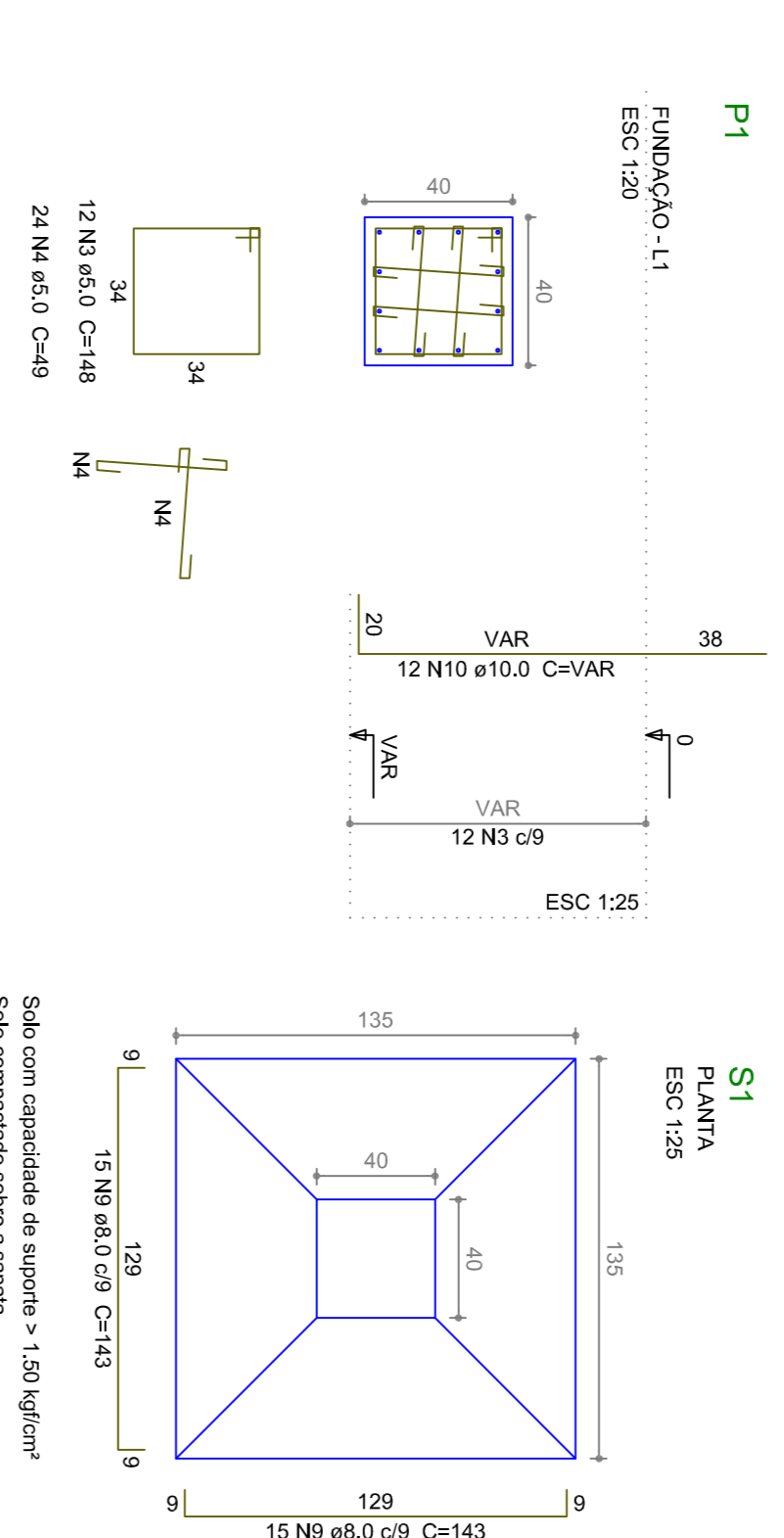
Relação do aço

ACO	N	DIAM	Q	UNIT	C.TOTAL
CA80	1	5,0	20	128	2560
CA80	2	5,0	42	148	1776
CA80	3	5,0	12	44	1776
CA80	4	5,0	48	148	2352
CA80	5	5,0	9	39	351
CA80	6	5,0	16	104	1684
CA80	7	6,3	20	119	2380
CA80	8	6,3	30	143	4250
CA80	9	8,0	34	VAR	2184
CA80	10	10,0	14	157	2184
CA80	11	10,0	12	152	1934
CA80	12	10,0	12	152	1934

Resumo do aço

ACO	DIAM	C.TOTAL	PESO + 10%
CA80	6,3	42,5	10,9
CA80	8,0	42,9	18,6
CA80	10,0	94,5	64,1
CA80	5,0	98,7	16,7
CA80	93,6		
CA80	16,7		

Vol. de concreto total (C-25) = 1,89 m³  
Área de forma total = 9,08 m²



Relação do aço

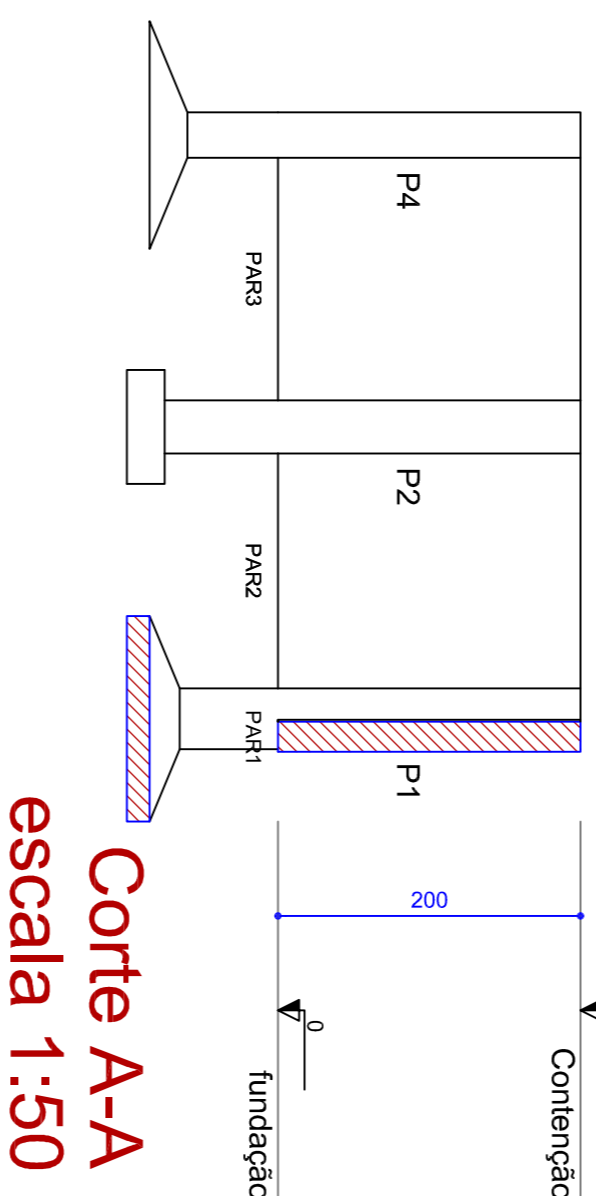
ACO	N	DIAM	Q	UNIT	C.TOTAL
CA50	1	5,0	23	148	3404
CA50	2	5,0	92	49	4598
CA50	3	5,0	40	128	5120
CA50	4	5,0	90	44	3520
CA50	5	5,0	17	39	693
CA50	6	5,0	17	39	693
CA50	7	10,0	34	197	6898

Resumo do aço

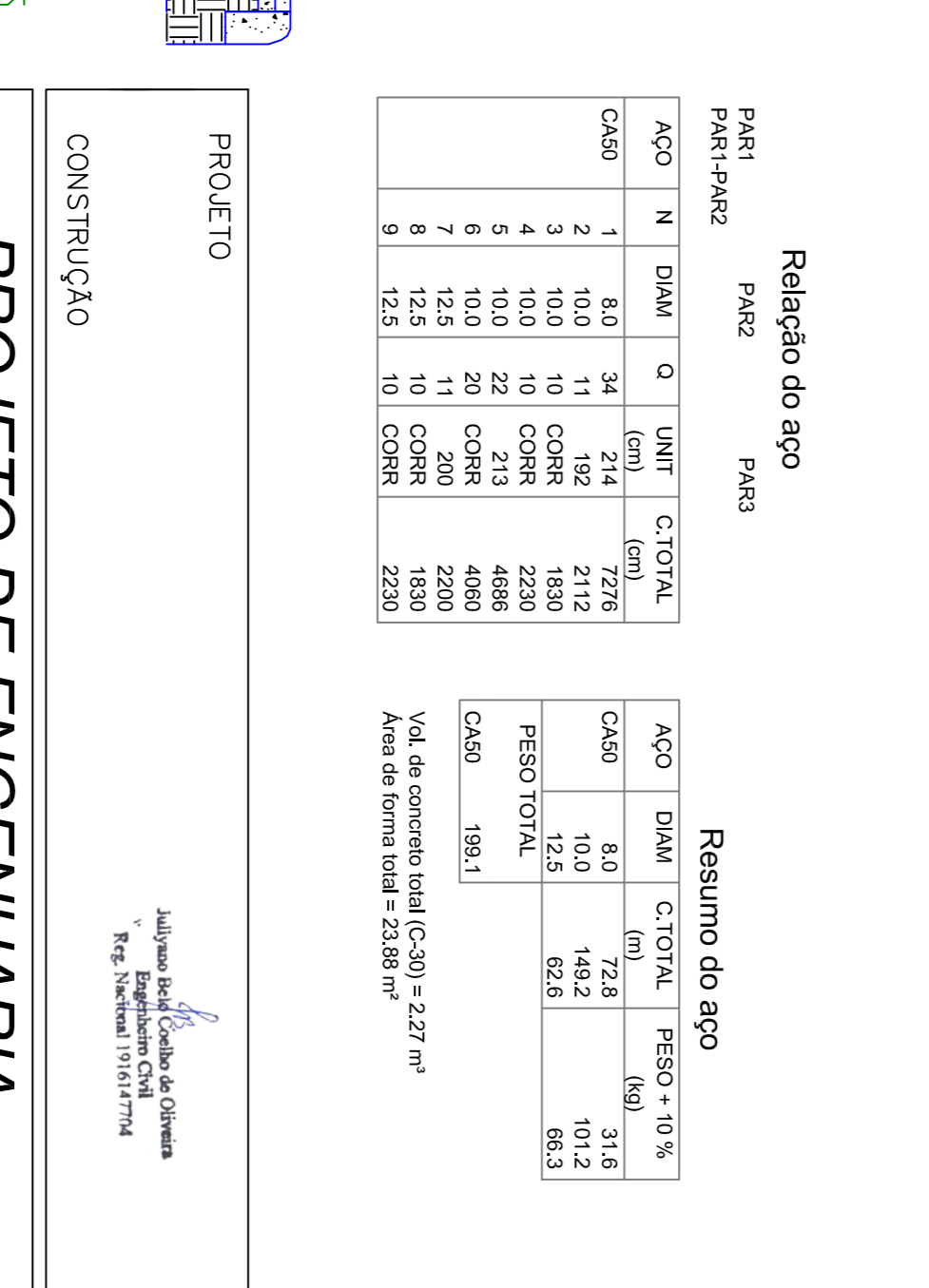
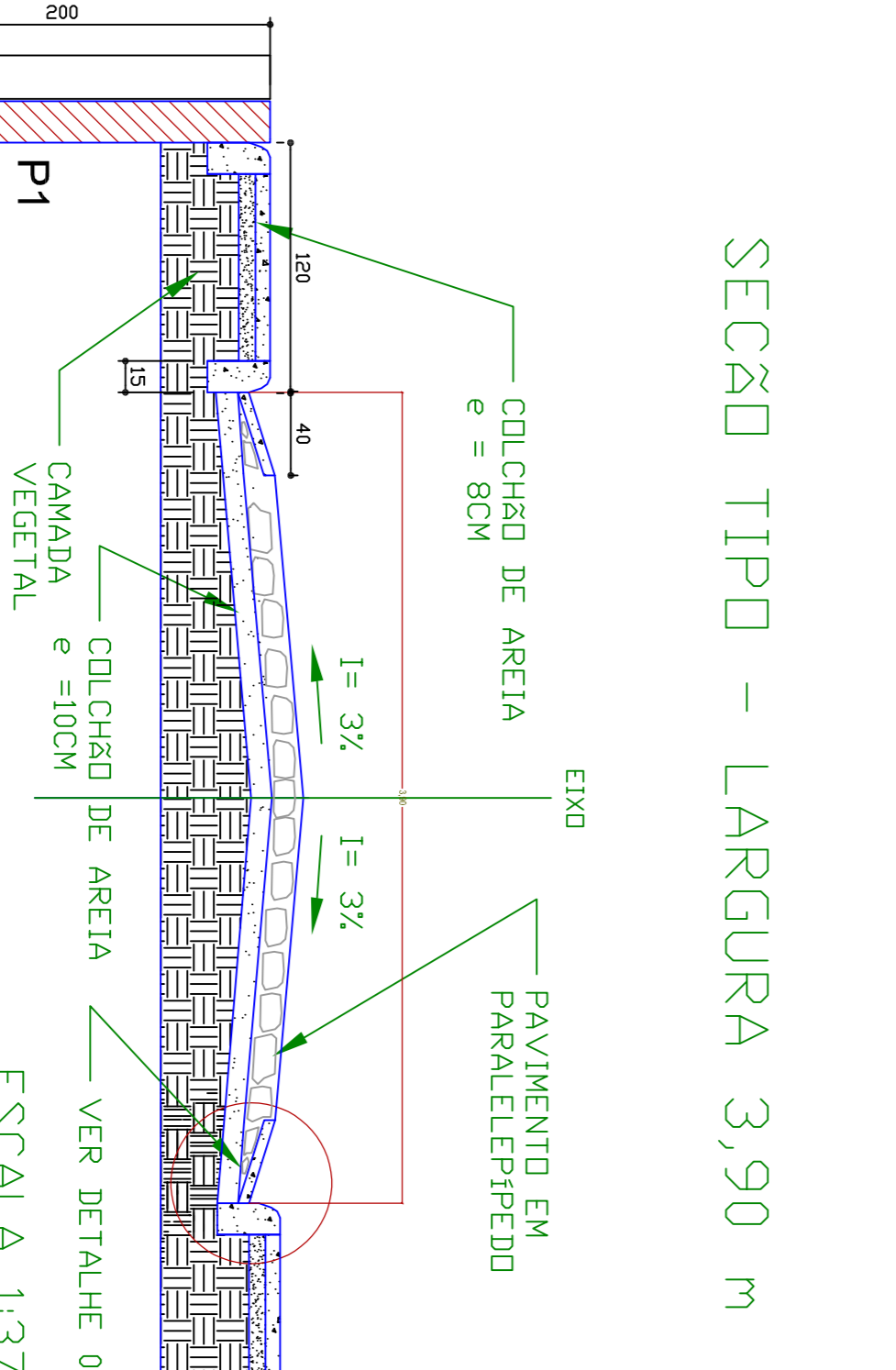
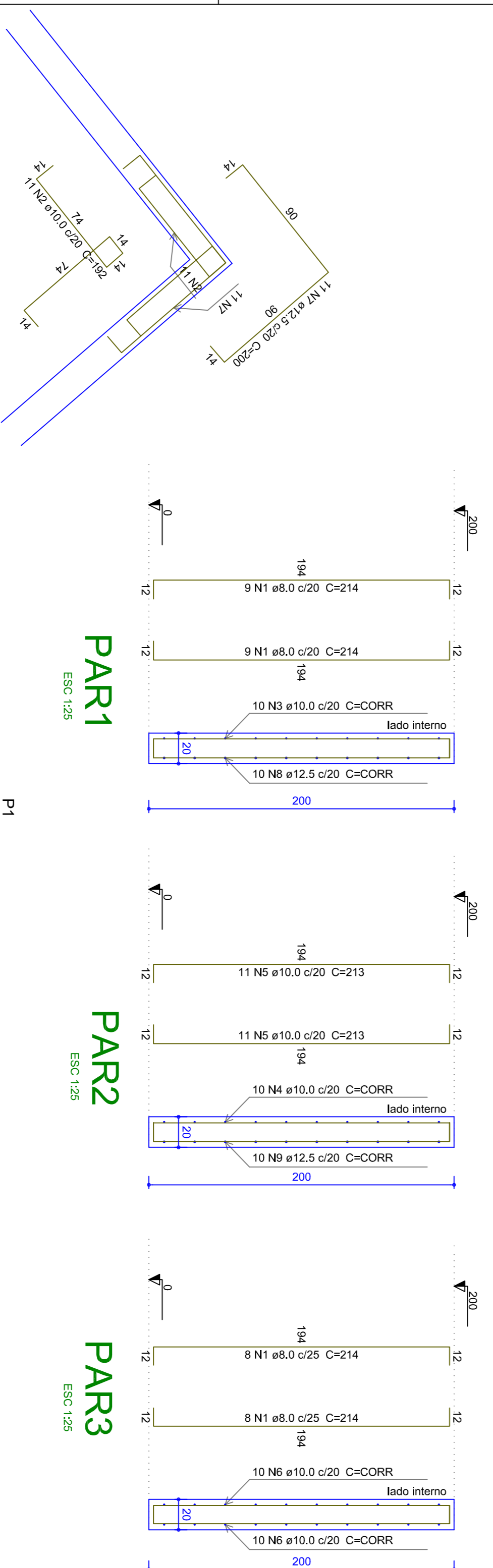
ACO	DIAM	C.TOTAL	PESO + 10%
CA50	10,0	67	45,4
CA80	5,0	192,3	32,6
CA80	45,4		
CA80	32,6		

Vol. de concreto total (C-25) = 1,02 m³  
Área de forma total = 11,4 m²

Corte A-A  
escala 1:50



SEÇÃO TIPO - LARGURA 3,90 m



Relação do aço

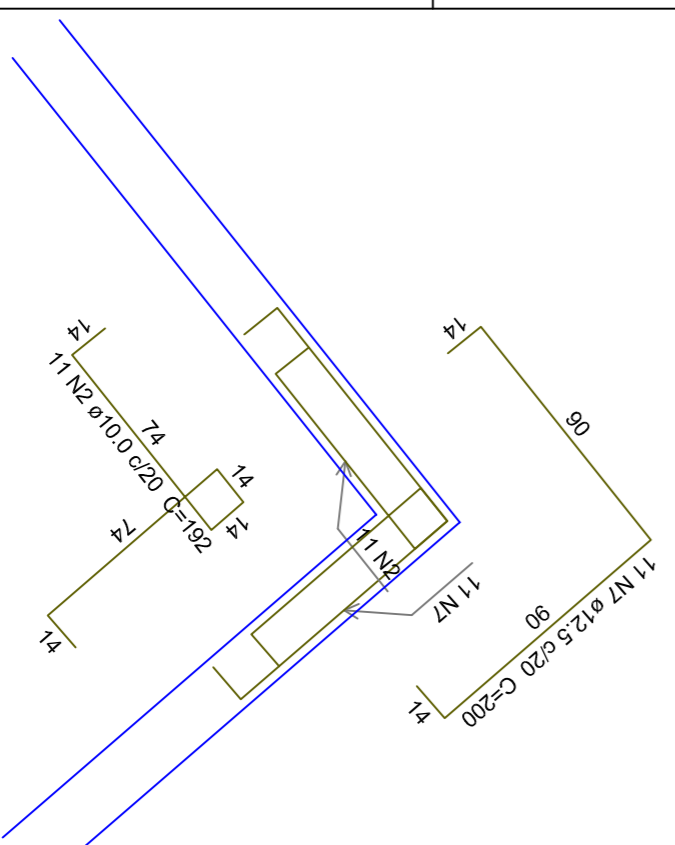
ACO	N	DIAM	Q	UNIT	C.TOTAL
CA50	1	8,0	34	194	6606
CA50	2	10,0	11	192	2112
CA50	3	10,0	10	COHR	1830
CA50	4	10,0	22	213	2230
CA50	5	10,0	22	213	4086
CA50	6	10,0	20	COHR	2290
CA50	7	12,5	10	COHR	1830
CA50	8	12,5	10	COHR	1830
CA50	9	12,5	10	COHR	2230

Resumo do aço

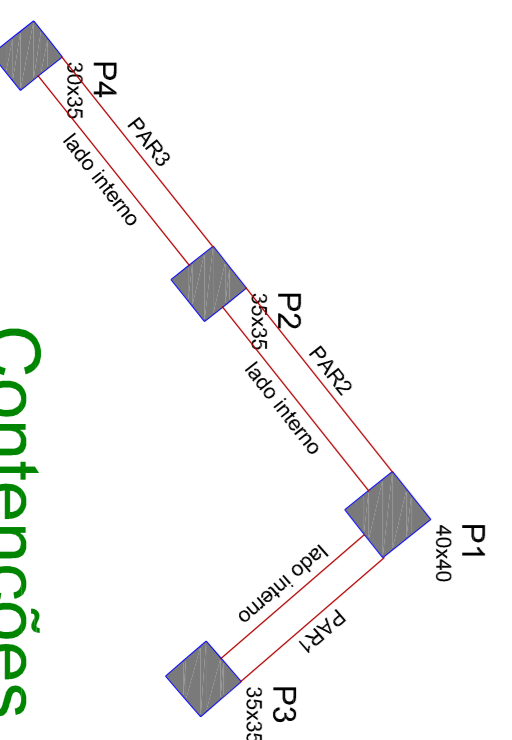
ACO	DIAM	C.TOTAL	PESO + 10%
CA50	8,0	80	31,6
CA50	10,0	149,2	101,2
CA50	12,5	62,6	66,3
CA50	199,1		

Vol. de concreto total (C-30) = 2,27 m³  
Área de forma total = 23,26 m²

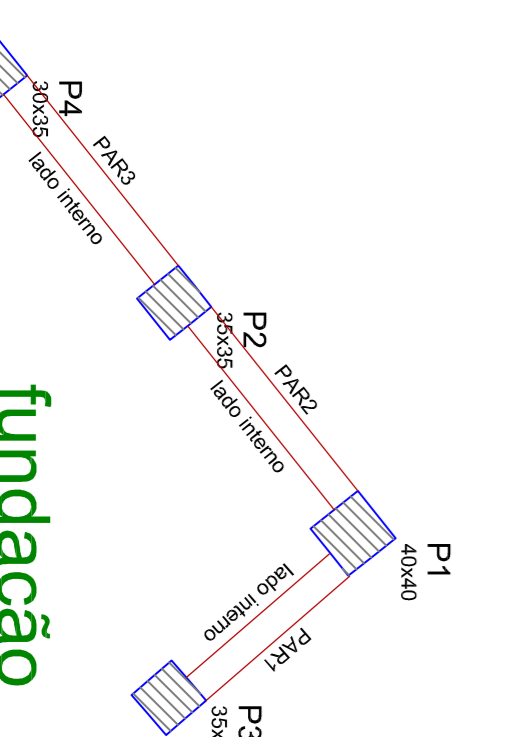
PAR1-PAR2  
escala 1:25



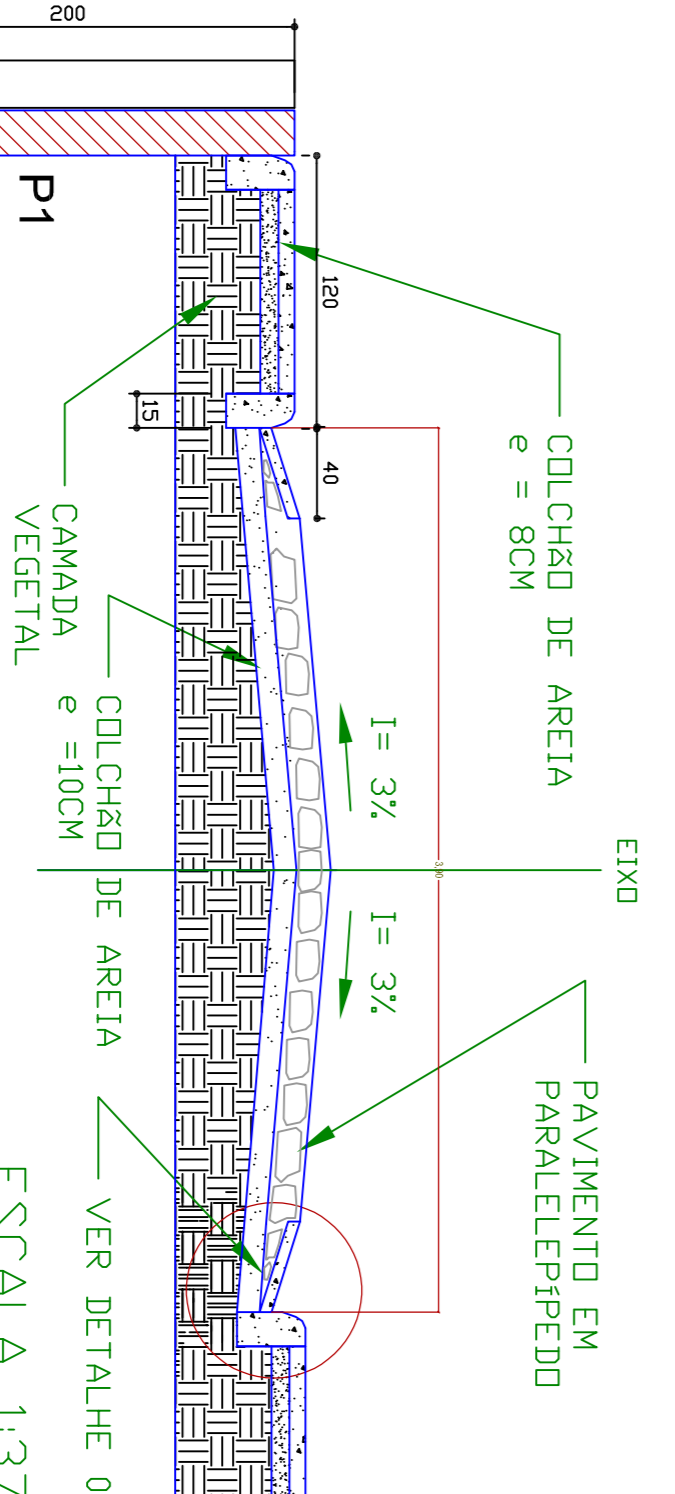
Contenções  
escala 1:50



fundação  
escala 1:50



CONTENÇÃO  
escala 1:37,5



PROJETO DE ENGENHARIA  
PREFEITURA MUNICIPAL DE SÃO RAIMUNDO NONATO/PI

PROJETO:	PAVIMENTAÇÃO DE VIAS PÚBLICAS N.º DO CONVENIO: 869760/2018
ESCALA:	INDICADA
DATA:	2018
ASSUNTO:	CONTENÇÃO DO PAVIMENTO DETALHES DAS PAREDES, PILARE E FUNDAÇÃO
FORMATO:	A1
FOLHA:	01/01